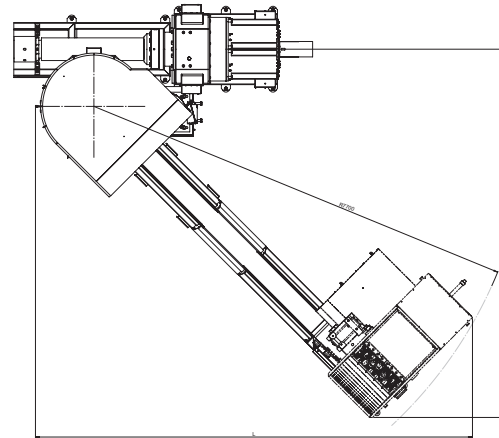
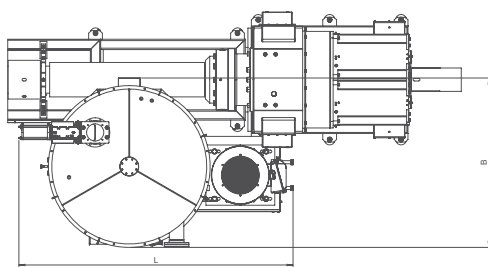
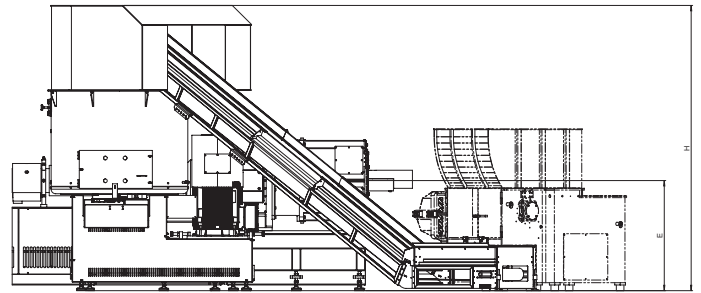
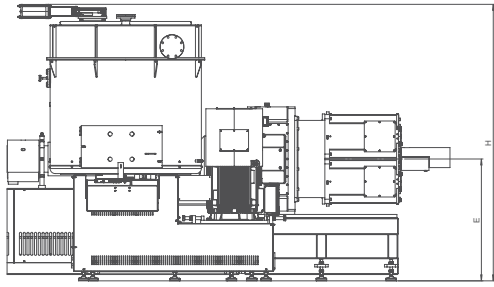


3C Rotary Feeder

Technical Data



Subject to modifications.

	3C 1000	3C 1100	3C 1300	3C 1400	3C 1500	3C 1800
Size MRS	MRS70	MRS90	MRS110	MRS130	MRS160	MRS200
Screw diameter Ø mm	70	90	110	130	160	200
Drive rating screw kW	110	170	235	355	540	860
Drive rating 3C kW	55	90	132	132	160	200
Extrusion height H mm	45	45	52	52	57	57
with vacuum conveyor						
Length L in	75	100	110	120	120	140
Width B in	50	60	65	70	75	80
Height H in	105	110	115	120	125	130
Weight approx. lbs	8,600	9,050	9,700	10,600	11,250	12,350
with conveyor belt and shredder						
Length L in	285	290	295	295	300	305
Width B in	240	242	246	248	250	256
Height H in	125	130	135	140	145	150
Weight approx. lbs	11,450	12,100	12,800	14,300	16,500	20,300

* As each machine is engineered to a specific project, the technical data may deviate from the values listed in this table. Detailed information on the relevant technical data is provided to you with your quotation.